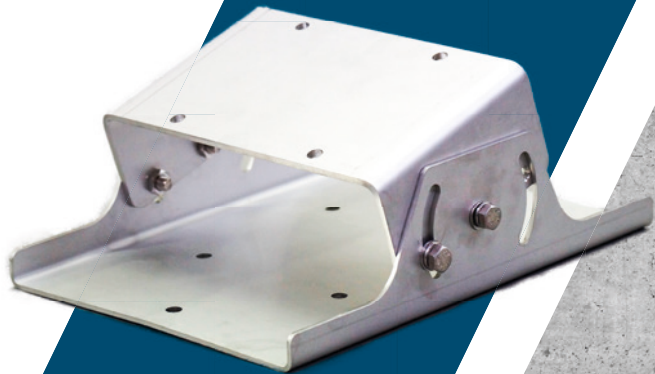


TECHON7

FT Wall Mount Bracket 1-Axis Assembly guide and info

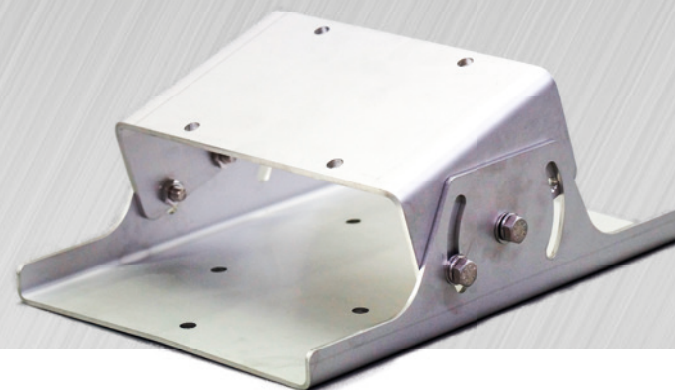


Stainless steel wall mount

Wall mounts for the
FT Series



FT Wall Mount Bracket 1-Axis



Wall mounts for the FT Series

Congratulations with your new FT1 Wall Mount 1-Axis. In the blue box on the right you will see the following contents which is in the box you have received to assemble your new FT1 Wall Mount 1-Axis.

In the following pages you will find the instructions on how to assemble the FT1 Wall Mount 1-Axis.

(Be aware that the FT1 Wall Mount 1-Axis only can be adjusted horizontally)

Box content

Pcs.	Name	Art. no.
1	Basic bracket	14576
1	1-AxisEndBracket	14576
6	M8x20 Bolt A4	14587
6	M8 Washer A4	14588
6	M8 Spring washer A4	14589
4	M8 Locknut A4	14590



1-AxisEndBracket

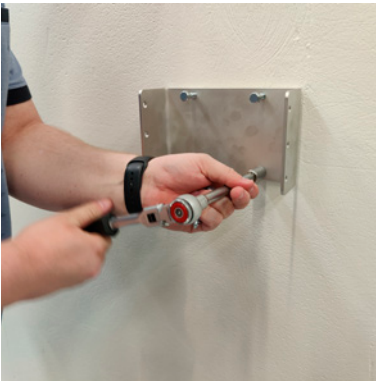


Basic bracket

We hope you enjoy your new setup.



Assembly guide



The first step is to figure out where to place your FT Wall Mount 1-Axis. Have in mind that this 1-AxisEndBracket will correspond to the centre of your terminal when installing.

(The 4 bolts shown on the image are not included)



The second step is to assemble the basic bracket onto the FT Touch Computer with 2 pcs. of M8X20 A4 Bolts. The Bolts should be assembled as shown in the image below for best results.

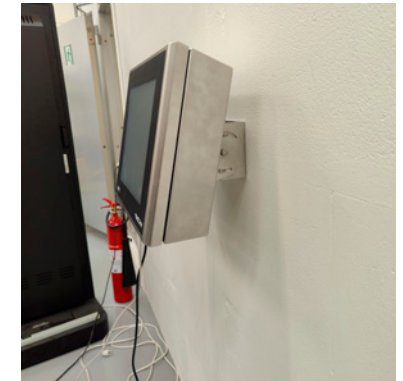


The third step is to assemble the FT Touch Computer with the Basic bracket onto the 1AxisEndBracket with 4 pcs. of M8X20 A4 Bolts.



(In this step you can adjust the viewing angle horizontally as you wish)

Fourth step is to secure the bolts with the locknuts for extra safety.

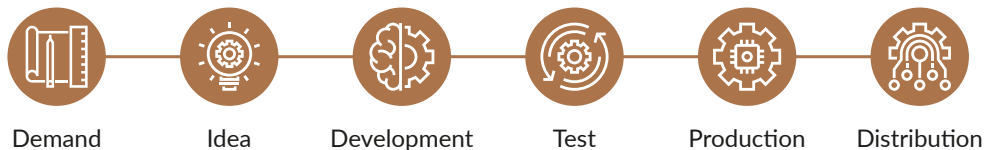


Your terminal is now installed on the FT Wall Mount 1-Axis in your preferred position. The fifth and final step is to connect the cables, so your FT Touch Computer can assist you in the daily production.

Technical solutions for your needs right now – and in the future

TECHON7 has a wide product program of Industrial Touch Screen Computers for food production and other industries. Our program of ruggedized industrial computer solutions can be used in various harsh environments from water to chemicals and dust. Our solid solutions meet several specific requirements, and the modular concept ensures reliability, repairability, and performance. Together we achieve more.

Our process brings value to your business



When Knowhow Matters

Techon7 ApS
Spettrupvej 1C | DK-8722 Hedensted
+45 7060 2777 | techon7.dk

Through customer insight and competent knowledge we develop and integrate modular components for innovative developers in industries, who aim for reliable and future-proof solutions

