

Accessory catalogue

FT Industrial Touch Screen
Computer Series



Table of content

- 04** Floor stand 1.9 meters
Keyboard arm
- 05** Mounting bracket printer shelf, term., keyb. el.pol
Printer box
- 06** Shelf for printer box el.pol
Scanner box
- 07** Shelf for scanner box el.pol
Ringbracket for floor stand el.pol
- 08** Bracket for cable tray
Cable tray 3.0 meters
- 09** Plate for power outlets
M6 screws w. locknut
- 10** Split cable gland - IP66 w. 4 grommets
Split cable gland - IP66 w. 2 grommets
- 11** Basic bracket el.pol
Main power cable - 3.2 meters, 230V, EU
- 12** IT box plate
Water-proof stylus pen
- 13** CEE poweroutlet 3-pol
Stand for terminal DC - 121016-77
- 14** Medical Keyboard IP68
Medical mouse IP68
- 15** M8 screws w. locknut
Industrial Touch Screen Computers

Features

All accessories for the FT Touch Screen Computers are made to be modular, flexible and easy to clean.

All stainless-steel accessories are manufactured in high quality AISI 316 which means they can be used in very harsh environments like the food industry.

The round and closed floor stand with special made ring bracket offers flexibility and endless mounting possibilities.

The FT Computers and accessories can be adjusted in height and turned in the desired position making it ergonomic for each employee to handle.

The floor stand

FTS1 Floor stand gives you the opportunity to place your FT Touch Computer on the floor. Set up the floor stand with four screws into the floor, and then you can mount any of the FTS Accessories you want directly on the floor stand (Up to 24" FT Touch Computers).

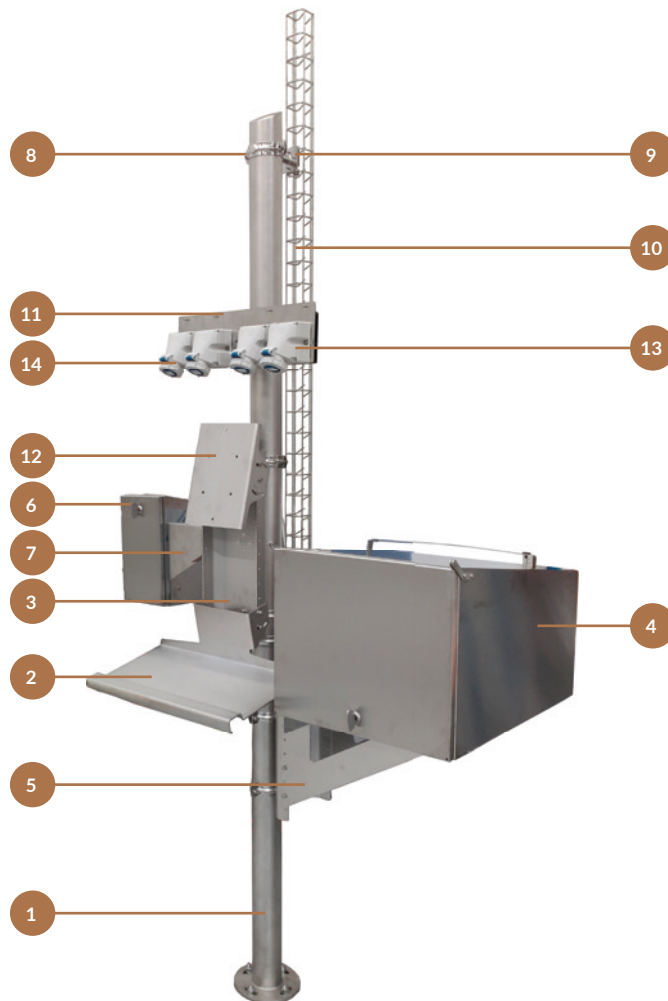


Image	Part no.	Description
1	14819	FTS1 Floor stand 1.9 meters el.pol
2	14820	FTS2 Keyboard arm el.pol
3	14821	FTS3 Mounting bracket printer shelf, term., keyb. el.pol
4	14822	FTS4 Printer box
5	14823	FTS5 Shelf for printer box el.pol
6	14824	FTS6 Scanner box
7	14825	FTS7 Shelf for scanner box el.pol
8	14826	FTS8 Ringbracket for floor stand el.pol
9	14827	FTS9 Bracket for cable tray
10	14828	FTS10 Cable tray 3.0 meters
11	14829	FTS11 Plate for power outlets
	14830	FTS12 M6 screws w. locknut
	14583	FTS13 Split cable gland - IP54 w. 4 grommets
	14845	FTS14 Split cable gland - IP54 w. 2 grommets
12	14576	FTS15 Basic bracket el.pol
	14598	FTS16 Main power cable - 3.2 meters, 230V, EU
13	14855	FTS17 IT box plate
	15118	FTS18, Water-proof stylus pen
14	15153	FTS19 Mennekes 9301 CEE wall mounted socket 3-pol 16A 230V IP67
	13598	FTS20 Foot for terminal DC - 121016-77
	15223	FTS21 Man & Machine REALLYCOOLIP68 Medical Keyboard
	15222	FTS22 ActiveKey medical mouse with scroll wheel sensor IP68
	15252	FTS23 M8 screws w. locknut

FTS1 Floor stand 1.9 meters

Part no. 14819

FTS1 Floor stand is available in standard height of 1.9 meters (can be delivered in other lengths on request).

The Floor stand is fully welded at the top and bottom for easy cleaning.

The top is tilted 25 degrees to ensure that water does not stay on the stand after cleaning.

The Floor stand is the main part for this FTS setup.

The Floor stand is made in high quality AISI 316 stainless steel, for easy cleaning.



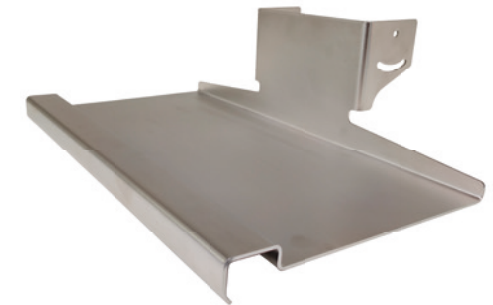
FTS2 Keyboard arm

Part no. 14820

The FTS2 Keyboard arm is used with the FTS3 mounting bracket.

When using the FTS12 M6 screw set, you can adjust and tilt the Keyboard arm vertically.

The Keyboard arm is made in high quality AISI 316 stainless steel, for easy cleaning.



FTS3 Mounting bracket

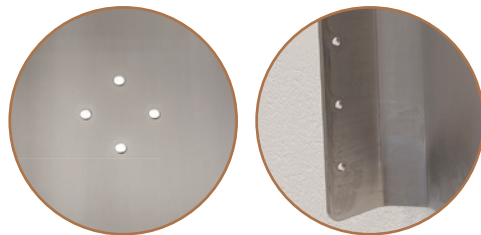
Part no. 14821

The Mounting bracket is a key part for the full setup. You will need the FTS12 M6 screw set to assemble.

The following can be assembled with the Mounting bracket:

- FTS2 Keyboard arm
- FTS5 Shelf for printer box
- FTS7 Shelf for scanner box
- FTS12 Basic bracket

The Mounting bracket is made in high quality AISI 316 stainless steel.



FTS4 Printer box

Part no. 14822

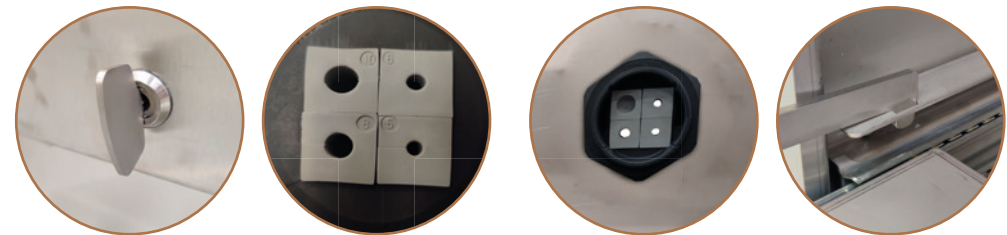
The FTS4 Printer box is designed for the label printer PX6i.

The Printer box is IP65 water and dust protected.

When using the FTS13 Split gland, the shelf can be locked in five positions.

To attach the Printer box to the FTS5 shelf, you will need the FTS23 M8 screw set.

The Printer box is made in high quality AISI 316 stainless steel.



FTS5 Shelf for printer box

Part no. 14823

FTS5 Printer shelf is used together with the FTS4 Printer box.

When attaching the Printer shelf to the FTS3 Mounting bracket, you will need the FTS12 M6 screw set.

The Shelf for printer box is made in high quality AISI 316 stainless steel.



FTS6 Scanner box

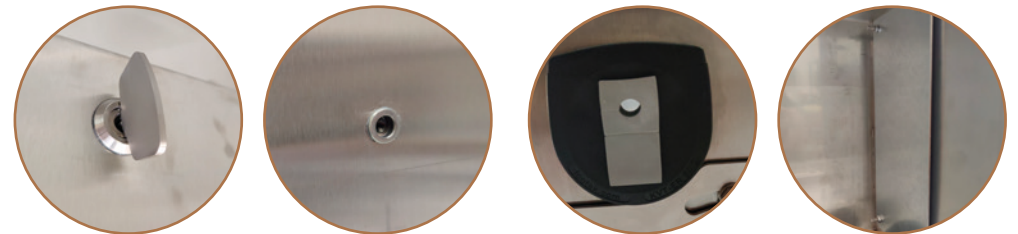
Part no. 14824

The FTS6 Scanner box is designed for the scanner Honeywell Granit 1981i or scanner boxes equivalent of the dimensions:
H:330mm/W:175mm/L:250mm.

Innerplate for wire running.

The Scanner box is IP65 water and dust protected when using the FTS14 split gland.

The Scanner box is made in high quality AISI 316 stainless steel



FTS7 Shelf for scanner box

Part no. 14825

FTS7 Shelf for scanner is used together with the FTS6 Scanner box.

When attaching the Scanner box onto the shelf you will need the FTS12 M6 Screw set.

The Shelf for scanner box is made in high quality AISI 316 stainless steel.



FTS8 Ringbracket for Floor stand

Part no. 14826

FTS8 Ringbracket is a key part in the assembling of the floor stand setup.

It is used to attach the:

- FTS9 + 10 Cable tray
- FTS11 + 17 power and it plate
- FTS15 Basic bracket to hold your FT Touch Screen Computer
- FTS3 Mounting bracket

You will need the FTS12 M6 screw set to attach the different product parts.

The Ringbracket is made in high quality AISI 316 stainless steel.



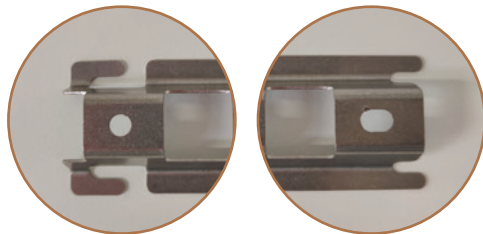
FTS9 Bracket for cable tray

Part no. 14827

FTS9 Bracket for cable tray is used together with the FTS10 Cable tray. You will need the FTS12 M6 screw set to attach to the FTS8 Ringbracket.

When assembling we recommend that you mount the brackets in opposite directions, to ensure the best solution.

The Bracket is made in high quality AISI 316 stainless steel.



FTS10 Cable tray 3 meters

Part no. 14828

FTS10 Cable tray is used together with the FTS9 Bracket for cable tray.

The length of the cable tray is 3 meters.

The Cable tray is made in high quality AISI 316 stainless steel.



FTS11 Plate for power outlets

Part no. 14829

FTS11 Plate for power outlets is used together with the FTS8 ringbracket and the FTS19 Socket CEE 3-pol 16A 230V IP67.

When assembling you will need the FTS12 M6 screw set.

The Plate for power outlets is made in high quality AISI 316 stainless steel.



FTS12 M6 screws

Part no. 14830

FTS12 M6 Screw set is used to assemble all the floor stand setup parts.

M6 crew set is made in high quality AISI 316 stainless steel.



**FTS13
Split cable gland
4 grommets**

Part no. 14883

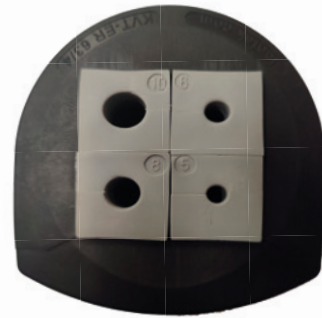
FTS13 split gland is used together with the FTS4 Printer box.

The split gland is made to reach the IP66 standard for Ingress protection.

Five types of grommets
(H: 19mm,W: 21mm,L: 21mm):

- Blank grommet
- Clamping range 5 - 6 mm
- Clamping range 6 - 7 mm
- Clamping range 8 - 9 mm
- Clamping range 10 - 11 mm

Has two screws that requires an 3mm Allen Key(not incl).



**FTS14
Split cable gland
2 grommets**

Part no. 14845

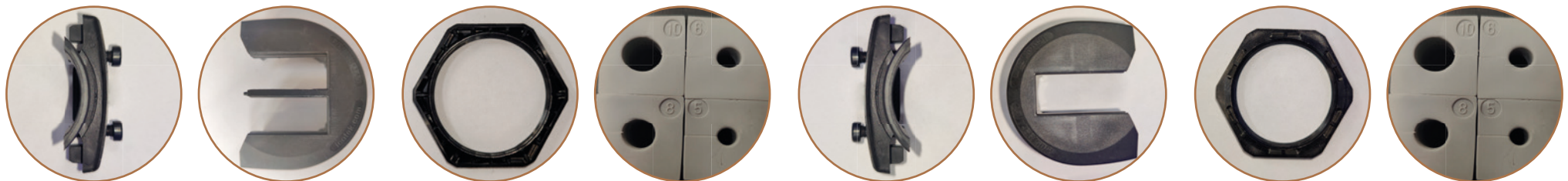
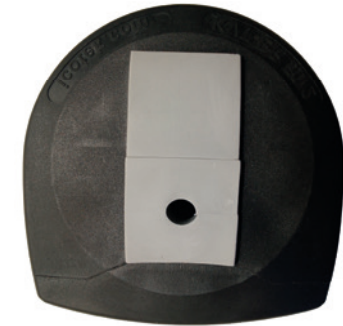
FTS14 split gland is used together with the FTS6 Scanner box.

The split gland is made to reach the IP66 standard for Ingress protection.

Five types of grommets
(H: 19mm,W: 21mm,L: 21mm):

- Blank grommet
- Clamping range 5 - 6 mm
- Clamping range 6 - 7 mm
- Clamping range 8 - 9 mm
- Clamping range 10 - 11 mm

Has two screws that requires an 3mm Allen Key(not incl).



FTS15 Basic bracket

Part no. 14876

FTS15 Basic bracket is used together with the FT Touch screen computers.

When using the FTS12 M6 Screw set, you can adjust and tilt the FT Touch Screen Computer vertically as you wish.

When attaching the FT Computers you need the FTS23 M8 screw set.

The Basic bracket is made in high quality AISI 316 stainless steel.



FTS16 Main power cable 230V, EU

Part no. 14598

FTS16 Main power cable with a standard length of 1.9 meters (can be delivered in other lengths on request)

FTS16 can be used together with all the Techon7 FT Touch Screen Computers.



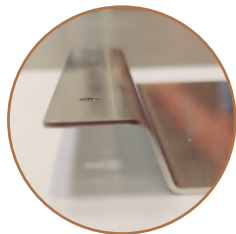
FTS17 IT box plate

Part no. 14885

FTS17 IT box plate is used together with the FTS11 Plate for power outlets.

When assembling you will need the FTS12 M6 Screw set.

The IT box plate is made in high quality AISI 316 stainless steel.



FTS18 Waterproof stylus pen

Part no. 15118

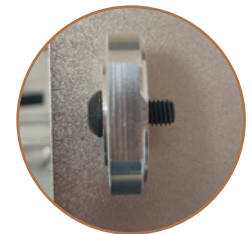
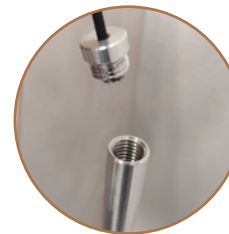
FTS18 Waterproof stylus pen IP68 is an add-on to the FT Touch Screen Computers.

The stylus supports Capacitive and Resistive touch screens.

Can be mounted three ways:

- Glueing pad
- Screwing 2 pcs. M3 screws (Not included)
- Drilling 22.5mm drill hole and screwing a M6 screw in (Incl.)

The top of the stylus can be unscrewed and has a compartment with an spare rubber cap.



FTS19 CEE poweroutlet 3-pol

Part no. 15153

FTS19 Split gland is used together with the FTS11 Plate for power outlets.

FTS19 Socket CEE 3-pol 16A 230V IP67.

When you attach it onto the plate for power outlets, you will need the FTS12 M6 screw set.

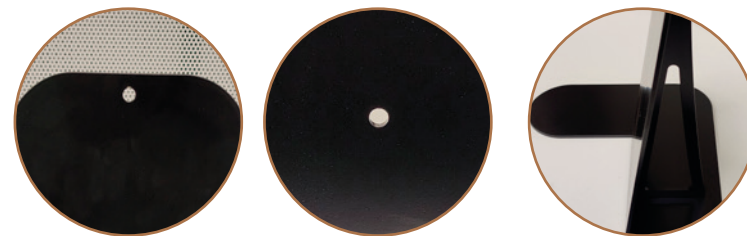


FTS20 Stand for computer

Part no. 13598

FTS20 is black and has 2 holes to attach the FT Touch Computers using the FTS23 screw set.

The Stand is made in high quality AISI 316 stainless steel.



FTS21 Clinical keyboard IP68

Part no. 15223

White clinical keyboard with a numpad, the keyboard is connected by USB cable length 180 cm.

Can be locked, hold the lock key down for 3 seconds.

IP68, CE certified.

Dimensions: 380x150x14 mm.

The FTS21 is used together with the FTS2 Keyboard arm and FTS22 Clinical Mouse.



FTS22 Clinical mouse IP68

Part no. 15222

White Clinical mouse with 2 buttons and a scroll sensor. The clinical mouse is connected by USB cable.

Dimensions: 112 x 60 x 38 mm

IP68, CE certified.

The FTS22 is used together with the FTS2 Keyboard arm and FTS21 Clinical Keyboard.



FTS23 M8 screw

Part no. 15252

FTS23 M8 Screw set is used to Attach the FTS4 printer box and all the FT Touch Screen Computers.

M8 Screw set is made in high quality AISI 316 stainless steel.



Industrial Touch Screen Computers

The different sizes from our FT Computer series below can all be fitted to the floor stand. This gives you the opportunity to place your FT Touch Screen Computer on the floor, where ever you need it in your production facilities.



FT150 15". Part no. 14524



FT171 17". Part no. 14503



FT240 24". Part no. 14744

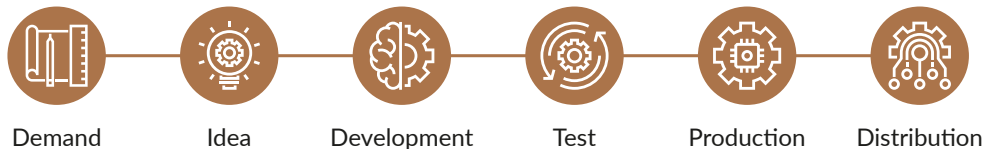


FT240-M 24". Part no. 15044

Technical solutions for your needs right now – and in the future

TECHON7 has a wide product program of Industrial Touch Screen Computers for food production and other industries. Our program of ruggedized industrial computer solutions can be used in various harsh environments from water to chemicals and dust. Our solid solutions meet several specific requirements, and the modular concept ensures reliability, repairability, and performance. Together we achieve more.

Our process brings value to your business



When Knowhow Matters

Techon7 ApS
Spettrupvej 1C | DK-8722 Hedensted
+45 7060 2777 | techon7.dk

Through customer insight and competent knowledge we develop and integrate modular components for innovative developers in industries, who aim for reliable and future-proof solutions

